

CHANG-ES

Continuum Halos in Nearby Galaxies
– an EVLA Survey

Home

About Us

Fits Files

CHANG-ES Publications

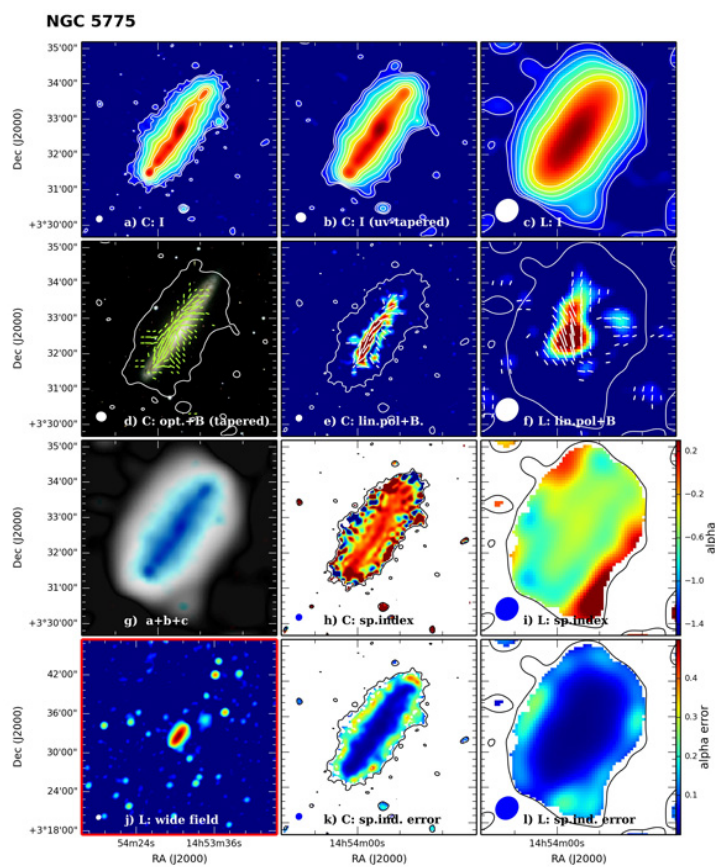
Press Releases

Contact Us

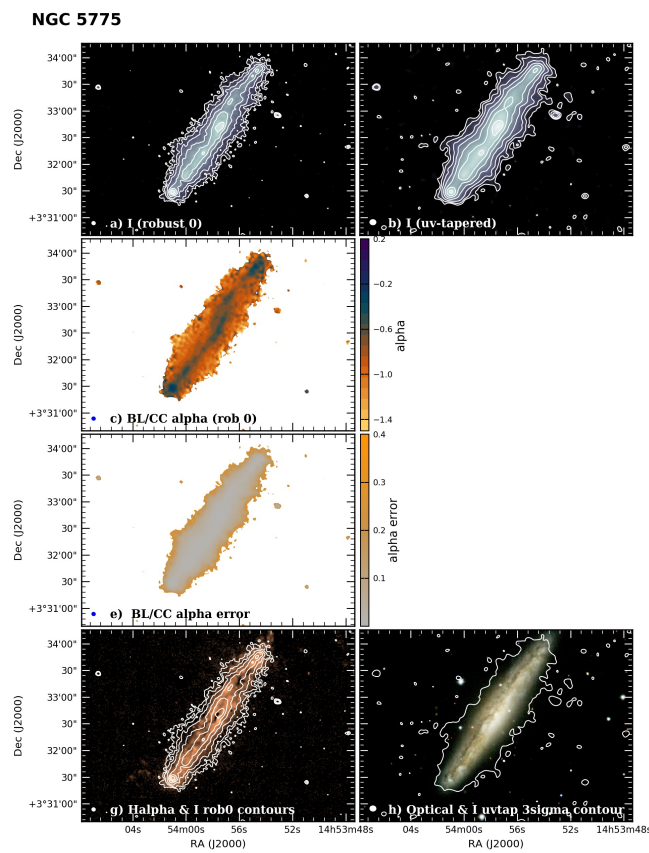


Home » NGC 5775

NGC 5775



From D configuration data release I (Wiegert et al. 2015). Please click on the image for a larger view.



From B configuration data release III (Irwin et al. 2019). Please click on the image for a larger view.

To obtain the fits data files, click on the configuration listings below and then on the band listings. Right click and "Save Link As..." to download the file. Then use your favourite FITS-reading software to display the image.

D Configuration

L-Band

C-Band

Most files are less than 1 MB in size.

HIGH RESOLUTION	LOW RESOLUTION
TOTAL INTENSITY	
Rob 0 (no PBcor)	UVtap (no PBcor)
Rob 0 (PBcor)	UVtap (PBcor)
LINEAR POLARIZATION	
Rob 0 (no PBcor)	UVtap (no PBcor)
Rob 0 (PBcor)	UVtap (PBcor)
POLARIZATION ANGLE	
Rob 0	UVtap
SPECTRAL INDEX	
Rob 0 (PBcor)	UVtap (PBcor)
SPECTRAL INDEX ERROR	
Rob 0 (PBcor)	UVtap (PBcor)

C Configuration

B Configuration*

Polarization Images

See Krause, M., et al. 2020 (CHANG-ES XXII) for details of these images.

Total Intensity fits image download

Intrinsic Polarization Angle fits image download

Degree of Polarization fits image download

Polarization Intensity fits image download

Rotation Measure fits image download

Rotation Measure Error fits image download

* + B Array L-Band to C Array C-Band Spectral Index Maps

KEYS

Rob 0: UV weighting is Briggs robust = 0

UVtap: UV weighting is Briggs robust = 0 plus an outer Gaussian taper

no PBcor: Images not corrected for primary beam

PBcor: Images corrected for primary beam

Useful Information / Warnings

Total Intensity: Use PBcor maps to measure flux densities and use no PBcor maps for uniform r.m.s.

Linear polarization: These polarization intensity images have been corrected for Ricean bias. Do not accept as real if P/I is less than 0.5%.

Polarization angle: Usually displayed as vectors (E-field). Rotate by 90 deg to obtain apparent B. Maps have been flagged wherever Stokes Q and U fall below 3 sigma. No PBcor is necessary. Uncorrected for *differential* ionospheric Faraday rotation.

Spectral index and spectral index error maps have been processed according to the prescription of Wiegert et al. (2015). Note carefully the error discussion in the paper. Ignore the FITS headers units of Jy/beam since these data are unitless.

